

1542 East Market Street
York, Pennsylvania 17403



TELE: (717) 848-8888
FAX: (717) 854-5659

OFFICE SPACE FOR LEASE 2500 Kingston Road YORK, PA



- # (1) 1,750sf unit on 2nd Floor
- # \$11.00/sf + CAM on 2nd Floor
- # 45 +/- Parking Spaces
- # Located within 1 miles of both Route 30 and I-83

DEMOGRAPHICS

Population w/in 5 miles: 130,449

For More Information Contact:
Lou Skeparnias
Sigma Commercial Realty, Inc.
(717) 848-8888

Property is Broker owned.

Information concerning this offering is from sources deemed reliable, but no warranty is made to the accuracy thereof and is submitted subject to errors, omissions, change of price or thereof conditions, prior sale or lease or withdrawal notice by Sigma Commercial Realty, Inc.

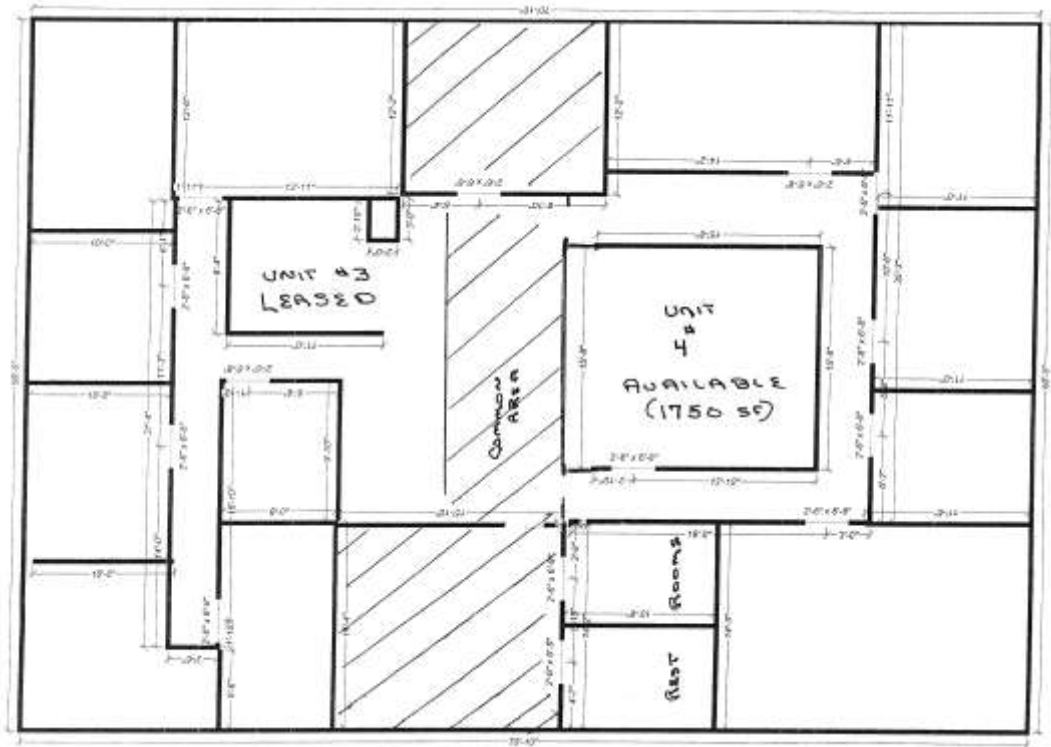


LICENSED IN PA AND MD

Sales Leasing Business Brokerage
Property Management Investment
Development



2nd Floor Floor Plan



2500 Kingston Road, York, PA



1542 East Market Street
York, PA 17403
(717) 848-8888

Property is Broker owned.